



# TILBURG UNIVERSITY

## STUDY ABROAD & EXCHANGE FACT SHEET 2023-24

# CONTACT

## STUDY ABROAD & EXCHANGE TEAM

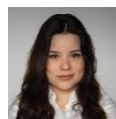
### STUDY ABROAD & EXCHANGE TEAM LEADER



**MS. ANNA RATHERT**

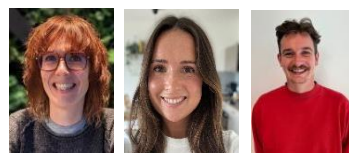
---

### STUDY ABROAD & EXCHANGE COORDINATORS (IN- & OUTBOUND EXCHANGE)



**MS. INGRID LIENDO GARCIA**

Canada, the UK & USA, special programs QTEM & ISEP



**MS. ELLIS RENDERS, MS. CAITLIN STONESTREET & MR. CHRIS VERSTAPPEN**

Europe



**MS. RACHAEL VICKERMAN**

Asia (excl. South East Asia) & the Middle East

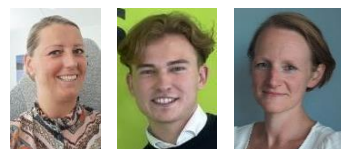


**MS. VERONIQUE HELLWIG**

South East Asia, Latin America, Africa & Oceania

---

### STUDY ABROAD & EXCHANGE OFFICERS (IN- & OUTBOUND EXCHANGE)



**MS. MONIQUE VELDMEIJER, MR. RIK VERLAAN & MS. PATRICIA HERRIJGERS**

#### VISITING ADDRESS

Tilburg University – International Office  
Intermezzo Building – Room I 612  
Professor de Moorplein 521  
5037 DR Tilburg  
The Netherlands

+31 (0)13 466 4477

✉ [studyabroad@tilburguniversity.edu](mailto:studyabroad@tilburguniversity.edu)

#### POSTAL ADDRESS

Tilburg University  
PO Box 90153  
5000 LE Tilburg  
The Netherlands

#### ONLINE CHANNELS

Website: [tilburguniversity.edu/exchange](https://www.tilburguniversity.edu/exchange)

Facebook: [Tilburg University – Study Abroad](https://www.facebook.com/TilburgUniversity-StudyAbroad)

Instagram: [@tilburguabroad](https://www.instagram.com/tilburguabroad)

#### ERASMUS+ INSTITUTION CODE

NL TILBURG 01

# OUR CAMPUS

## GREEN SPACE & AN INTERNATIONAL COMMUNITY



### ABOUT TILBURG UNIVERSITY

Tilburg University is a thriving university specializing in Social Sciences and Arts & Humanities. Social connection, academic excellence, and a strong campus feeling are at the heart of our education experience. Understanding and serving society is what drives us. Our green campus offers an attractive base for fostering an international community where students and teachers can inspire and challenge each other. Tilburg University consists of five different schools: Economics & Management, Law, Social and Behavioral Sciences, Humanities and Digital Sciences, and Theology. University College Tilburg provides the interdisciplinary Bachelor's program of Liberal Arts and Sciences. TIAS School of Business and Society is the business school of Tilburg University and Eindhoven University of Technology, offering post-graduate education.



According to the three most renowned university rankings (THE, ARWU, and QS), Tilburg University belongs to the best 2% of the world's 17,000 universities. [tilburguniversity.edu/about/tilburg-university/rankings](https://tilburguniversity.edu/about/tilburg-university/rankings)

### ABOUT TILBURG

Large enough to find plenty to do, but still small enough to run into people you know, Tilburg is an idyllic, entrepreneurial and cultural city with world-class public institutions and a calendar packed with a variety of public events. It's a true university city, too: with a population of 30,000 students, 1 in 8 people in Tilburg is a student!

### CAMPUS LIFE

With our green campus designed to be fast and easy to navigate, you will be able to stroll between the library and your lecture hall or your favorite café in no time. All university buildings are within walking distance from each other, and are set amongst landscaped gardens and open green spaces. Our campus is home to over 17,000 students.

Take a virtual campus tour at [tilburguniversity.edu/campus-tour](https://tilburguniversity.edu/campus-tour)

Total student population in Tilburg:	approx. 30,000
Population of Tilburg:	approx. 2174,000
Distance to Amsterdam (by car):	110 km / 68 miles
Distance to Brussels (by car):	120 km / 75 miles
Distance to Paris (by car):	415 km / 257 miles
Distance to Berlin (by car):	680 km / 422 miles

For information about studying in the Netherlands:  
[youtube.com/studyinholland](https://youtube.com/studyinholland)



### INCLUSIVE MOBILITY

Students of all backgrounds are welcome at Tilburg University. A range of services are available for students who may require extra support. For more information, see: <https://inclusivemobility.eu/countries/nl/institutions/6878>



# NOMINATION & APPLICATION

## IMPORTANT DATES & REQUIREMENTS

### A NOTE ON CORONAVIRUS MEASURES

---

There are currently no COVID-19 regulations in the Netherlands and on Tilburg University's campus. Nevertheless, we are continuously monitoring the local and global situation, including relevant measures and travel restrictions. Exchanges in the 2023-24 academic year will be organized accordingly. Official information on COVID-19 regulations can be found via the Dutch government's website: <https://www.government.nl/topics/coronavirus-covid-19>

#### NOMINATION DEADLINES

Fall 2023 and Full Year	1 May 2023
Spring 2024	1 October 2023

#### APPLICATION DEADLINES

Fall 2023 and Full Year	15 May 2023
Spring 2024	15 October 2023

#### REGISTRATION DAYS

Fall 2023	Mid/late August 2023 *
Spring 2024	Late January 2024 *

#### T.O.P WEEK (ORIENTATION PROGRAM)

Fall 2023	Late August 2023 *
Spring 2024	Late January 2024 *

#### START OF CLASSES

Fall 2023	Late August 2023 *
Spring 2024	Late January / early February 2024 *

#### EXAM PERIOD

Fall 2023	December 2023 / January 2024 (plus re-sits in January if necessary) *
Spring 2024	May / June 2024 (plus re-sits in July if necessary) *

#### RE-SIT EXAM PERIOD

Fall 2023	January & mid-June / July 2024 *
Spring 2024	Mid-June / July 2024

*\* Period and exact dates to be confirmed and are subject to change.*

### BALANCE BETWEEN SEMESTERS

---

Due to the high number of incoming students in the fall semester (August – January) and, consequently, a high demand for student housing, we prefer an equal balance in nominations from our partners across both semesters.

### CONTRACTS AND PARTNERSHIPS

---

For any queries regarding exchange contracts and partnerships with Tilburg University, please contact our International Relations department directly at [internationalrelations@tilburguniversity.edu](mailto:internationalrelations@tilburguniversity.edu).

## NOMINATION & APPLICATION PROCEDURE

---

 [tilburguniversity.edu/education/exchange-programs/applicationprocedure](https://www.tilburguniversity.edu/education/exchange-programs/applicationprocedure)

Students should check with their home university whether Tilburg University is one of their exchange partners, and apply for an exchange through their home university. Partner universities are advised to note that from 2021, we no longer accept nominations via email. Instead, partners should submit the details of their selected students via our new online nomination system. A link to the system and login details will be emailed to partners closer to the nomination deadlines.

All nominated students will receive an email with the application instructions and practical information about the exchange program at Tilburg University a few weeks before the application deadline. Students should complete their application online. All required documents need to be uploaded through the online application system. We no longer require original documents. As part of their online application, students must upload:

1. Transcript of records **in English** (students who are in their Master studies must upload both their Bachelor and Master grade list)
2. Additional documents may apply for specific courses (e.g. motivation letter and/or essay). Please find more information in the 'courses for exchange students' section of this fact sheet (below)

## ELIGIBILITY REQUIREMENTS

---

### BACHELOR / UNDERGRADUATE EXCHANGE

1. We rely on our partner universities to nominate students who are proficient in English to **CEFR level B2** (equivalent to the test scores found on our [website](#)).

Students with mainland Chinese nationality need to submit a TOEFL or IELTS certificate to obtain a visa.  
Students of other nationalities do not need to submit any certificates to prove their proficiency in English.

2. Successfully completed at least 1.5 years of education, but preferably two years of studies within in a relevant field of studies (economics, business, law, social & behavioral sciences, humanities, theology).

### MASTER / GRADUATE EXCHANGE

1. We rely on our partner universities to nominate students who are proficient in English to **CEFR level C1** (equivalent to the test scores found on our [website](#)).

Students with mainland Chinese nationality need to submit a TOEFL or IELTS certificate to obtain a visa.  
Students of other nationalities do not need to submit any certificates to prove their proficiency in English.

2. Successfully **completed** an undergraduate program in a relevant field of studies (economics, business, law, social & behavioral sciences, humanities, theology).

 <https://www.tilburguniversity.edu/education/exchange-programs/language-requirements>

The requirement for students with Chinese nationality to submit an IELTS or TOEFL certificate applies only to students from mainland China (not Hong Kong, Macau or Taiwan). It applies to all mainland Chinese students, including those who are studying for their degree program outside of China.

# COURSE INFORMATION

## COURSES FOR EXCHANGE STUDENTS

[tilburguniversity.edu/education/exchange-programs/courses](https://tilburguniversity.edu/education/exchange-programs/courses)

Tilburg University offers a wide variety of undergraduate and graduate level courses to exchange students. Our incoming exchange students are allowed to take courses from all schools, as long as they meet the prerequisites of the courses at the start of the semester. In some cases, other restrictions or selection criteria may apply (e.g. minimum grade average, motivation to take a course, etc.). These will be mentioned as “conditions apply” on the course webpage. We offer courses within the fields of:

Microeconomics	Macroeconomics	Econometrics
Finance	Accounting	Marketing
Information Management	Operations Research	Organization & Strategy
Organization Studies	Human Resource Studies	Psychology
Sociology	Theology	Public Administration
Culture Studies	Philosophy	Liberal Arts & Sciences (restricted)
Global Law (restricted)	Law	Communication & Information Sciences
Data Science	Cognitive Science & Artificial Intelligence	

## LANGUAGE COURSES

[tilburguniversity.edu/education/languages](https://tilburguniversity.edu/education/languages)

Our on-campus Language Center offers courses to students who wish to improve their skills in Dutch, Chinese, English, French, Portuguese, Russian, German, Spanish or Italian. In addition, tools for self-study are offered to anyone who wishes to improve their language skills. Exchange students receive language vouchers (of 12 ECTS in total) with which they can register for a language course for free!

## CERTIFICATE PROGRAMS FOR EXCHANGE STUDENTS

[tilburguniversity.edu/education/exchange-programs/courses/certificate-programs](https://tilburguniversity.edu/education/exchange-programs/courses/certificate-programs)

All fall semester exchange students are invited to participate in one of our Certificate Programs. These programs are designed for students who would like to specialize and gain a depth of understanding in a focused area of study. A certificate will only be awarded if the student successfully completes all courses from the program. The following certificated programs are available:

Accounting		Information Management		Marketing	
Finance	Organization & Strategy	Economics	Entrepreneurship		
Econometrics and Operations Research			International Business Administration		

## LEARNING EXPECTATIONS



### INSTRUCTION METHODS

A mix of (guest) lectures to a larger number of students and interactive seminars, workshops and tutorials with in-depth discussions in groups of between 10 and 40 students.

### ASSESSMENT METHODS

Oral or written examinations (some courses have midterms as well), individual or group papers, essays, case studies, in-class presentations and other forms of coursework all count towards the final grade. At the end of each semester an examination period is scheduled.

## COURSE LOAD

- Most courses are 6 ECTS (study load of 168 hours)
- A full time workload for one semester is 30 ECTS
- A regular workload for exchange students is 4 or 5 courses (24 – 30 ECTS)

## GRADING SYSTEM

The Dutch grading system uses grades from 1 to 10. Grades with one decimal place can be issued. The lowest passing grade at Tilburg University is a 6.0. Any grade below 6.0 is a fail.

### BACHELOR GRADES:

Grade	Description	% of students with same grade	% of students with same grade or higher
10.0	Excellent	1%	1%
9.5	Excellent	1%	2%
9.0	Excellent	4%	6%
8.5	Excellent	7%	12%
8.0	Very good	12%	25%
7.5	Very good	15%	40%
7.0	Good	18%	58%
6.5	Good	17%	75%
6.0	Sufficient	25%	100%

### MASTER GRADES:

Grade	Description	% of students with same grade	% of students with same grade or higher
10.0	Excellent	0%	0%
9.5	Excellent	1%	1%
9.0	Excellent	4%	5%
8.5	Excellent	9%	14%
8.0	Very good	17%	31%
7.5	Very good	20%	52%
7.0	Good	20%	72%
6.5	Good	14%	86%
6.0	Sufficient	14%	100%

# LIFE IN TILBURG

## COST OF LIVING, HOUSING & SERVICES



### COST OF LIVING

Living in Tilburg is relatively inexpensive compared to other Dutch university cities. The cost of living is approximately €975 per month as estimated by the Netherlands' Immigration and Naturalization Service. Below is a general overview of monthly costs for students. These estimated costs can vary from person to person and also depend on individual lifestyle.

MONTHLY LIVING COSTS (ESTIMATE)	
Accommodation	€375-550
Food and beverages	€300
Books and readers	€80
Health, liability, travel insurance	€45
<i>Total</i>	€975

A second-hand bicycle and lock will cost about €125. A university sports card costs €127,95 per semester or €164,95 for one year.

### SERVICES AND FACILITIES

#### STUDY ABROAD & EXCHANGE TEAM

The Study Abroad & Exchange Team is the first point of contact for exchange students. We are here to help ensure students' exchange experience runs as smoothly as possible at all points of the process.

#### VISA APPLICATION

[tilburguniversity.edu/education/welcome-new-student/immigration](https://www.tilburguniversity.edu/education/welcome-new-student/immigration)

Tilburg University's team of specialist Immigration Coordinators process visa applications for all incoming students who require a visa and/or residence permit to study in the Netherlands. They help students through every step of the process, taking into account your personal situation.

Students who require a visa and/or residence permit must pay an immigration fee of €210 to begin their immigration process. The process will begin shortly after the exchange application deadline. Please note that students are required to show proof that they have the necessary funds to finance their stay in Tilburg. This is currently **€4875** for one-semester students (5 months) and **€9750** for full-year students (10 months). Means by which students can prove their access to these funds will be explained to students in their personal online immigration profile.

#### HOUSING

[www.tilburguniversity.edu/education/welcome-new-student/accommodation](https://www.tilburguniversity.edu/education/welcome-new-student/accommodation)

Tilburg University does not offer on-campus accommodation. However, we are partnered with student housing organization WonenBreborg, which offers furnished accommodation to international students via [yourroomintilburg.com](https://yourroomintilburg.com). Most of the rooms are in the building on Professor Verbernelaan (popularly known as "Verbs"), on the edge of campus. There are also a small number of rooms available at the Goirkestraat facility for full-year exchange students. Unfortunately, rooms in the Talent Square building are not available for exchange students. The number of available rooms is limited, meaning that less than half of incoming exchange students will be able to reserve a room. Rooms are allocated on a first-come, first-served basis via registration in an online system.

The monthly rent for the 2023-24 academic year is around €375 per month. The rental contract for fall semester students runs from August to January (5 months) and for spring semester students from January to August (6.5 months). **All semester-long students must pay the rent for the entire semester at the time of registration.** Full-year students must make two payments: one before their arrival for the first semester, and one halfway through the academic year for the second semester.



Students who are not able to register for reserved accommodation need to find their own accommodation on the private market. It is their own responsibility to arrange this and our Housing Office ([studenthousing@tilburguniversity.edu](mailto:studenthousing@tilburguniversity.edu)) can assist where needed. We also offer our incoming students the opportunity to sub-let a Tilburg University student's room whilst that student is on exchange abroad. This is coordinated internally via a search portal. Availability of sub-lets varies per semester and students must arrange the conditions of the sub-let between themselves.

There is an extremely high demand for housing on the private market, especially in fall semesters, meaning that sourcing accommodation can be difficult. Students with a flexible choice regarding in which semester to study abroad are advised to come to Tilburg in the spring semester to avoid a potentially stressful search for accommodation. **Tilburg University advises students not to travel to Tilburg or to make other financial commitments if they have not secured housing.**

### MEDICAL SERVICES IN TILBURG

There is currently a lot of pressure on General Practitioner (GP) services in Tilburg. Many GP practices are full and do not have space for new patients to register. Students are advised to be persistent with their search and to contact the Study Abroad & Exchange Office if they require further information or assistance. Most GP practices offer 'passerby' appointments, whereby students can make a same-day appointment without needing to register as a patient.

Students with pre-existing medical conditions who know they may need regular medical attention are advised to start looking for a GP with available spaces before their arrival in Tilburg. Similarly, students who take regular medication are advised to stock up on their prescribed medication in their home country, and to bring enough medication to Tilburg to last them at least a few weeks. (It is wise to check with the airline or travel operator how much medication is allowed on board.)

### HEALTH INSURANCE

[tilburguniversity.edu/education/welcome-new-student/insurances](https://tilburguniversity.edu/education/welcome-new-student/insurances)

All students are required by law to be covered by appropriate health insurance for their full period of stay in the Netherlands. We strongly recommend students to also have appropriate liability and travel insurance. It is students' own responsibility to arrange this. Tilburg University recommends Aon+ Student Insurance: [aonstudentinsurance.com/students/en/](https://aonstudentinsurance.com/students/en/)

### ORIENTATION: REGISTRATION DAYS, PROGRAM INTRODUCTION & T.O.P WEEK

[tilburguniversity.edu/education/welcome-new-student/introduction-activities/topweek](https://tilburguniversity.edu/education/welcome-new-student/introduction-activities/topweek)

[tilburguniversity.edu/education/welcome-new-student/introduction-activities/registration-days](https://tilburguniversity.edu/education/welcome-new-student/introduction-activities/registration-days)

Tilburg University organizes a Registration Day to offer a warm welcome to Tilburg. On this day, we provide students with all kinds of information and amenities that will contribute to a relaxed and organized start in Tilburg. The Study Abroad & Exchange team runs a mandatory Program Introduction (PI) for all incoming exchange students during the optional Tilburg Orientation Program (TOP) week. During the PI, we welcome all exchange students. Students will get to meet the Study Abroad & Exchange Team and their mentor, and receive more information about, for example, how to make use of our digital student environment as well as our academic and cultural environment. We recommend participation in the TOP week to get the full introduction to student life in Tilburg!

### UNIVERSITY LIBRARY

[tilburguniversity.edu/about/university-library](https://tilburguniversity.edu/about/university-library)

Tilburg University's library is one of the most modern university libraries in Europe, and a popular place to study individually or in groups. It is home to an impressive collection of e-books, e-journals. In addition, its collection of over 800,000 books, journals, illustrations, early works and manuscripts provide a treasure of scholarly information.

### MENTOR SYSTEM

[esntilburg.nl](https://esntilburg.nl)

ESN Tilburg (formerly I\*ESN), our international student organization, organizes a mentor system for incoming international students. ESN also organizes regular activities for all international students and internationally-minded Dutch students at Tilburg University. ESN runs a dynamic international hub in Tilburg city center.



# STUDENT LIFE

## FACILITIES & EVENTS

Tilburg University offers a rich student life with over 40 student organizations, excellent sports facilities and a large number of pubs, bars, cinemas, museums and concert halls. Combined with the numerous events organized by and within the (student) community such as festivals, exhibitions and conferences, this ensures that Tilburg has something to offer for everyone.

### DESTINATION: EXCHANGE EVENT

We invite our incoming exchange students to be part of our Destination: Exchange Event, which takes place each semester. The event is aimed at Tilburg University's outgoing students who are about to embark on their semester abroad. It offers a chance for our outgoing students to meet incoming students currently in Tilburg, to share tips and inspiration about studying abroad. For our incoming students, this contact with local students aids their settling in and integration into Tilburg and for our outgoing students, they can receive valuable advice from students who are already in the exchange experience, as well as handy information from students who come from the host country that they will be travelling to.

### STUDY AND STUDENT ORGANIZATIONS

[tilburguniversity.edu/students/studying/student-associations](https://tilburguniversity.edu/students/studying/student-associations)

Study and student associations are a great place to meet like-minded students and make new friends. Among the student organizations in Tilburg are:

- **ESN Tilburg:** an active internationally-minded organization aimed at enrichment of (international) student life in Tilburg.
- **Enactus:** a community of student, academic and business leaders committed to using the power of entrepreneurial action to transform lives and shape a more sustainable world.
- **AEGEE:** one of Europe's biggest interdisciplinary student organizations, striving for a diverse and borderless Europe.
- **AIESEC:** a non-profit student organization aiming to develop leadership among students by providing a safe platform where they can discover what matters to them, while pushing them to constantly take up new challenges.
- **AWake International (Association for World Affairs):** aimed at raising awareness of important social and environmental issues, and at providing aid through fundraising events.
- **Asset:** the study association of the Tilburg School of Economics and Management.
- **Magister:** the study association of the Tilburg Law School.

### SPORTS FACILITIES

[tilburguniversity.edu/about/culture-and-sports/sports-center](https://tilburguniversity.edu/about/culture-and-sports/sports-center)

The state-of-the-art Sports Center offers a wide variety of sports and exercise facilities at all levels. The Center has two large sports halls, fitness rooms, a dedicated weight-training area, squash courts and a sauna. The outdoor facilities include a semi-water-based hockey pitch, six tennis courts and a beach volleyball pitch, among others. The Sports Center offers over 45 sports activities, including Zumba, rock climbing, boxing and yoga.

Tilburg University also has a number of active student sport associations that make use of the sport center and its facilities. For example: T.S.B.V. Pendragon (Basketball), T.S.V.V. Merlijn (Soccer), T.S.G.V. Underpar (Golf), T.S.R.C. Tarantula (Rugby)

### TILBURG UNIVERSITY SUMMER SCHOOL

[tilburguniversity.edu/summerschool](https://tilburguniversity.edu/summerschool)

The Tilburg University Summer School offers students a taste of living and studying in Tilburg. It offers a unique way of combining learning with fun and meeting students from all over the world. Visit the website for more information on the available courses, tuition fees, social program and more.